

NOW LEASING

4847 N. Daisy Dawn Pl. #115

North of Ruthrauff

Tucson, Arizona 85705



**Branel Real Estate
Company, LLC**



Office

Strategically located in the business district adjacent to Ruthrauff Road, less than two miles from Interstate 10. This functional office includes reception area, spacious private office, multi-purpose work/copier room with ample built in cabinetry, kitchenette with fridge, microwave and cabinets, large restroom featuring full sized shower and lots of windows for natural light. The property is gated with access control and alarm systems for additional security.

Property Highlights:

- ☐ ± 800 Square Foot Office space
- ☐ \$18 PSF/Yr. Triple Net, estimated at \$3 PSF/Yr.
\$1,400/mo. plus 0.5% rental tax
- ☐ Furnishings included (can be removed if desired)
- ☐ Convenient parking and secured gated area after hours
- ☐ Zoning Pima County MU

For More Information, contact:
Branel Real Estate Company, LLC
Batoun Herrington, CCIM, CPM®
520-524-5248
batoun@branelre.com

No warranty or representation, express or implied, is made to the accuracy or completeness of the information contained herein, and same is submitted subject to errors, omissions, change of price, rental or other conditions, withdrawal without notice, and to any special listing conditions imposed by the property owner(s).

NOW LEASING

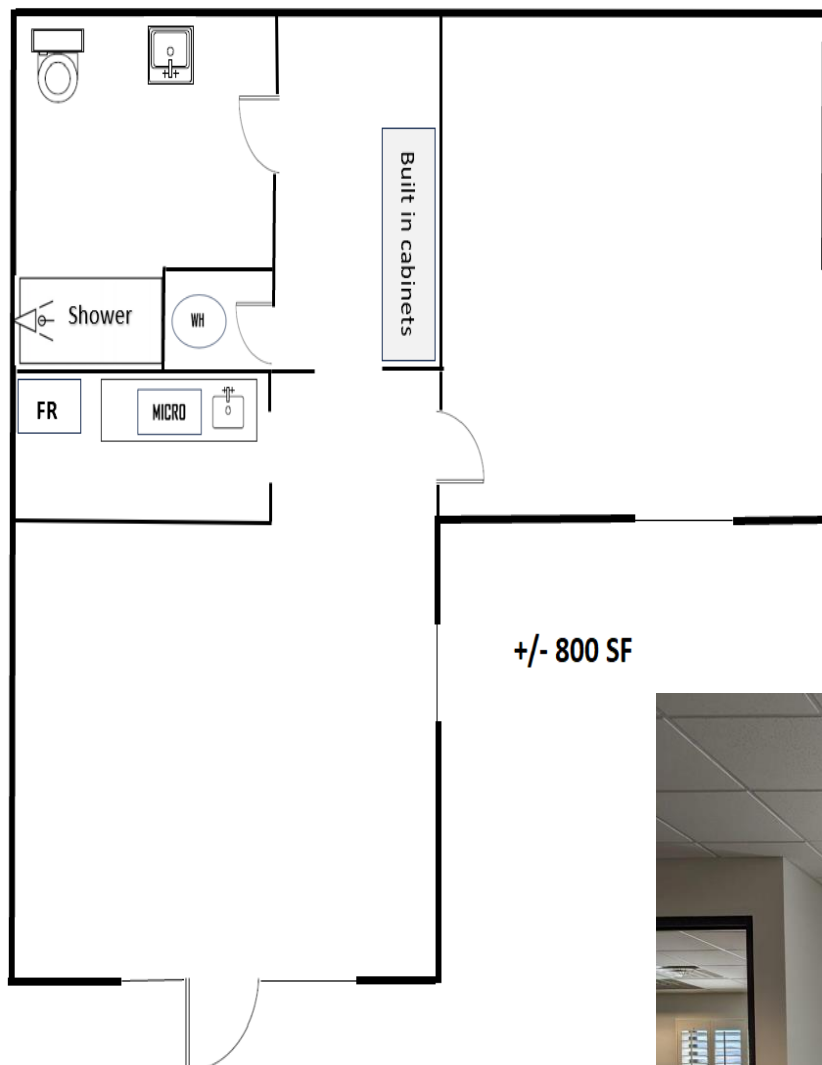
4847 N. Daisy Dawn Pl
North of Ruthrauff
Tucson, Arizona 85705



Branel Real Estate
Company, LLC

Floor Plan:

4847 N. Daisy Dawn Place #115



For More Information, contact:
Branel Real Estate Company, LLC
Batoun Herrington, CCIM, CPM®
520-524-5248
batoun@branelre.com

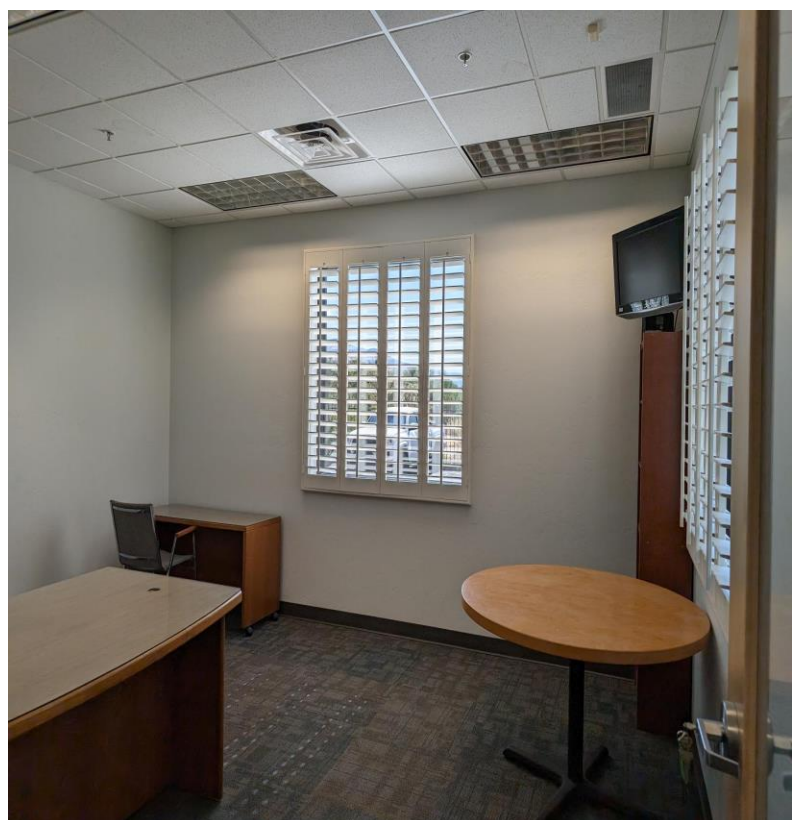
No warranty or representation, express or implied, is made to the accuracy or completeness of the information contained herein, and same is submitted subject to errors, omissions, change of price, rental or other conditions, withdrawal without notice, and to any special listing conditions imposed by the property owner(s).

NOW LEASING

4847 N. Daisy Dawn Pl
North of Ruthrauff
Tucson, Arizona 85705



Branel Real Estate
Company, LLC



For More Information, contact:
Branel Real Estate Company, LLC
Batoun Herrington, CCIM, CPM®
520-524-5248
batoun@branelre.com

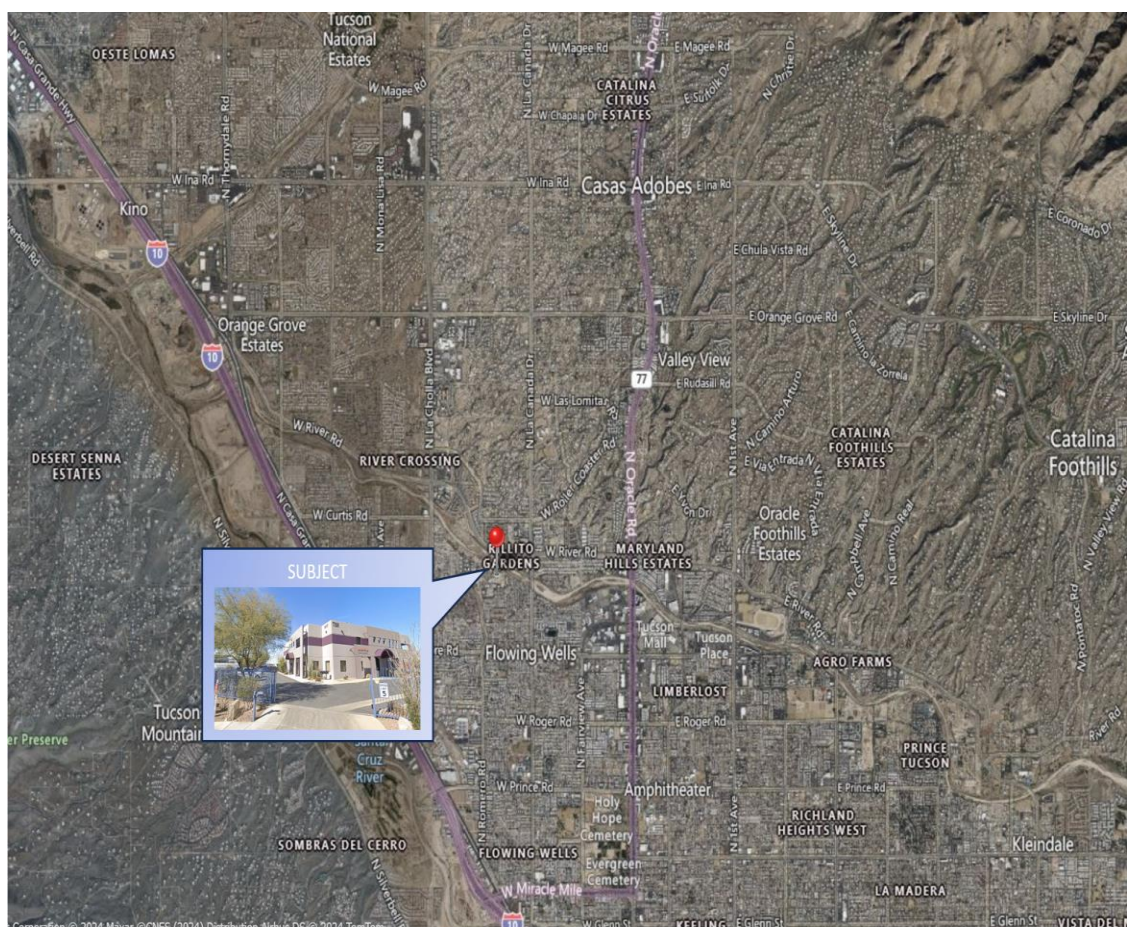
No warranty or representation, express or implied, is made to the accuracy or completeness of the information contained herein, and same is submitted subject to errors, omissions, change of price, rental or other conditions, withdrawal without notice, and to any special listing conditions imposed by the property owner(s).

NOW LEASING

4847 N. Daisy Dawn Pl
North of Ruthrauff
Tucson, Arizona 85705



Branel Real Estate
Company, LLC



For More Information, contact:
Branel Real Estate Company, LLC
Batoun Herrington, CCIM, CPM®
520-524-5248
batoun@branelre.com

No warranty or representation, express or implied, is made to the accuracy or completeness of the information contained herein, and same is submitted subject to errors, omissions, change of price, rental or other conditions, withdrawal without notice, and to any special listing conditions imposed by the property owner(s).